



**1 Bed
Apartment
located in**



Flat 9, Lorne Court 2a
Lorne Road
London
E17 7PX



1



1



1



C

£1,500 Per Month

1 Bedroom Ground Floor First Floor - Lorne Court, Lorne Road,
Walthamstow E17 7PX

Sincere Lettings are pleased to offer this lovely First floor 1-bedroom flat, finished with stylish interiors throughout. Located on a quiet residential street just moments from excellent transport links and Walthamstow's thriving local amenities.

- Open Plan living
- Contemporary fitted kitchen
- Sleek bathroom suite
- Communal Outdoor space
- Natural light
- Part Furnished

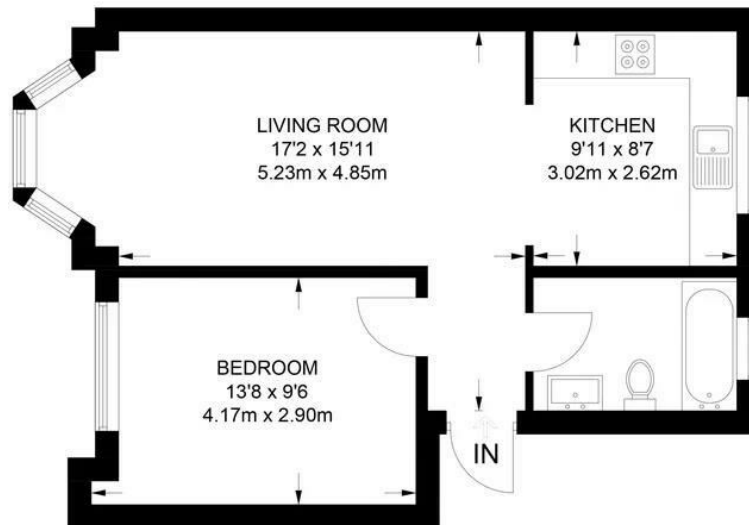
Location:

Perfectly positioned close to Walthamstow Central and Queens Road, offering fast connections into Central London. A great selection of shops, cafes, and amenities can be found nearby along Hoe Street and Walthamstow Market.





Flat 9, Lorne Court 2a Lorne Road, London, E17 7PX



GROUND FLOOR

APPROXIMATE GROSS INTERNAL AREA
484 SQ FT / 45.0 SQ M

This plan has been drawn for illustrative and identification purposes only.

Energy Efficiency Rating		
	Current	Potential
Very energy efficient - lower running costs		
(92 plus) A		
(81-91) B		
(69-80) C	76	
(55-68) D		
(39-54) E		
(21-38) F		
(1-20) G		
Not energy efficient - higher running costs		
England & Wales		EU Directive 2002/91/EC

DIRECTIONS

CONTACT

252 Hoe Street
London
E17 3AX

E: admin@sincerelettings.co.uk

T: 02085200425

www.sincerelettings.co.uk

